



**Collaborative
Results System
with Families at
the Center**

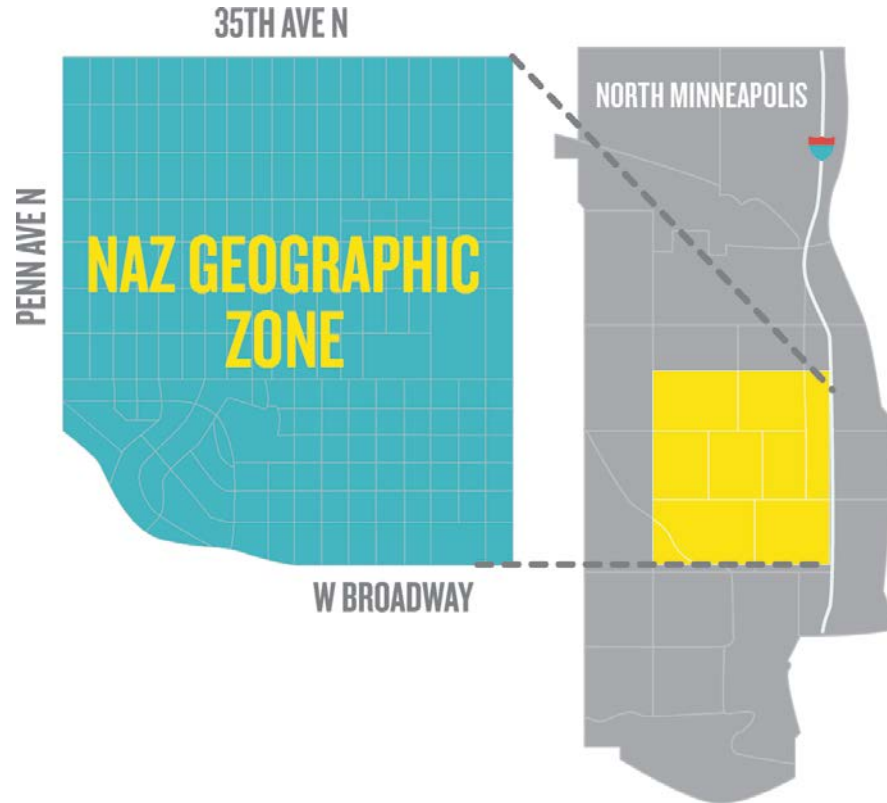


AN ORGANIZATION & COMMUNITY OF CHANGE

- Formed out of a collaborative started in 2008
- NAZ has been the “backbone” organization for a collective impact collaborative since 2010, with significant scale up after Promise Neighborhood investment starting 2012
- NAZ is made up of:
 - 10 schools
 - More than 30 partners
 - 870+ Northside families



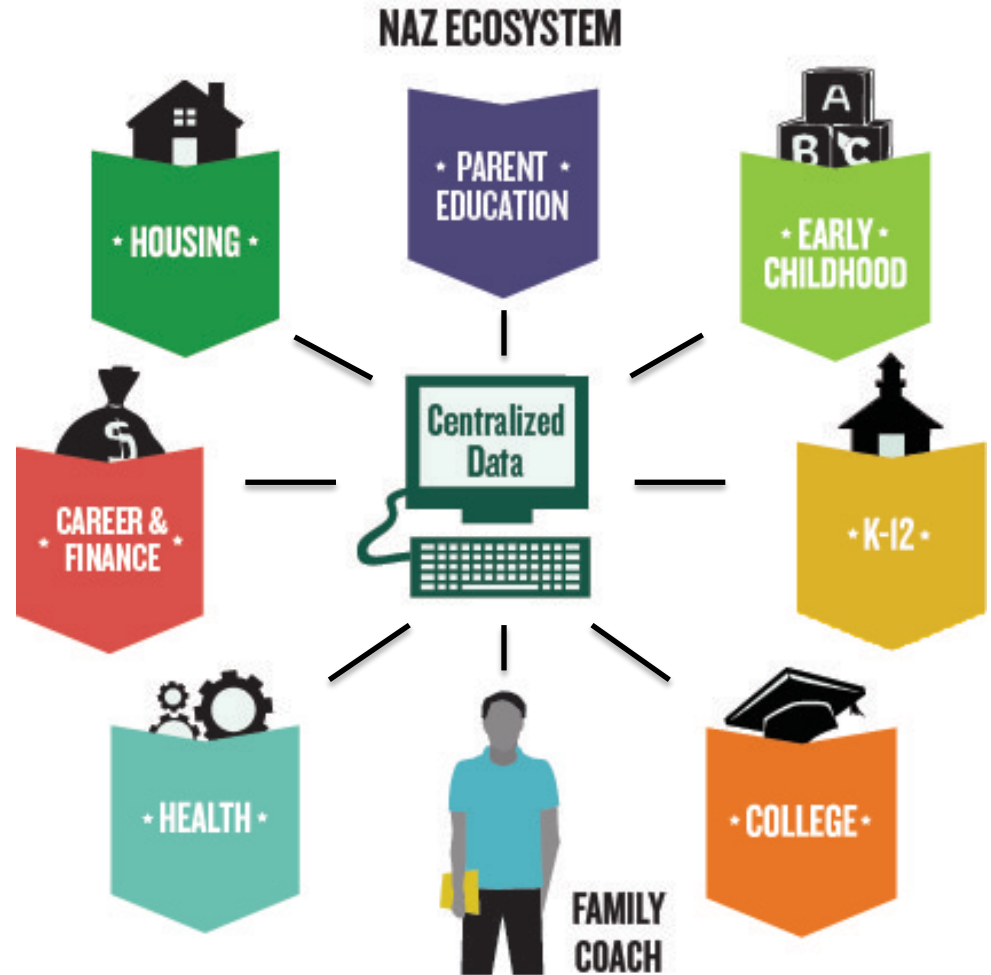
NAZ GEOGRAPHIC ZONE





**ONE EFFECTIVE SYSTEM
ACROSS MANY PARTNERS**

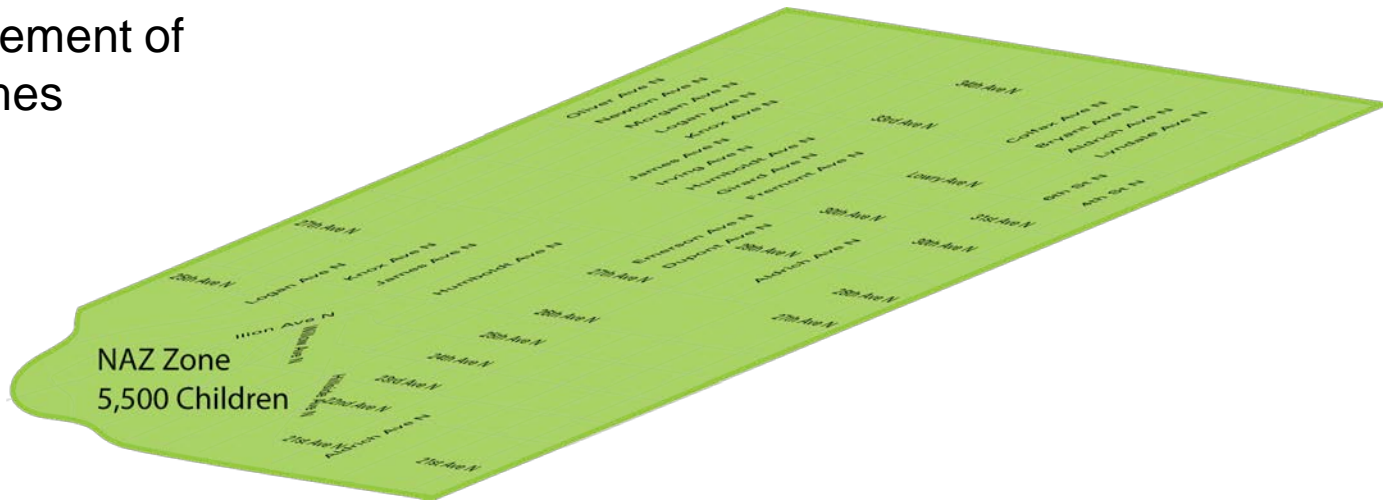
HIGH TOUCH, HIGH TECH PARTNERSHIP



NAZ RESULTS FRAMEWORK

Entire Zone

Population that NAZ
is accountable for
improvement of
outcomes



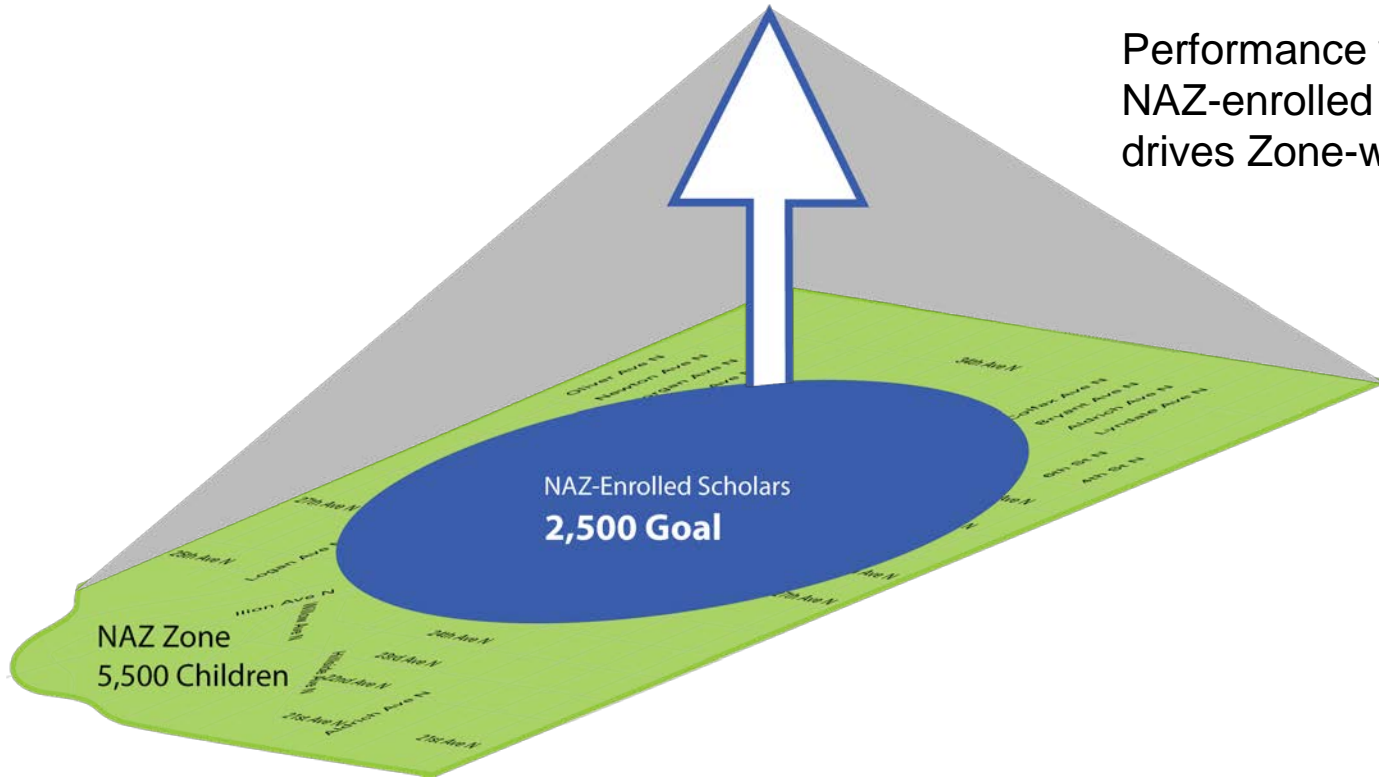
NAZ RESULTS FRAMEWORK

NAZ-enrolled

Group of scholars
NAZ is implementing
solutions with and
accountable for
performance.



POPULATION-LEVEL RESULTS



Performance with
NAZ-enrolled Scholars
drives Zone-wide results.



DATA SYSTEM



Achievement planning and data collection system

- Drives achievement
- Supports coordination across partners
- Tracks individual, program & longitudinal data

SHARED BEST PRACTICES

- Partners follow evidence-based plans
- Track real-time results for programs and individuals
- Blueprint for replication
- Public/private partnership
- Multi-sector and cross agency alignment for first time on Northside
- Data driven set of strategies





SHARED BEST PRACTICES

Solution Plans



ONE SYSTEM IS ESTABLISHED

★ *One* ★

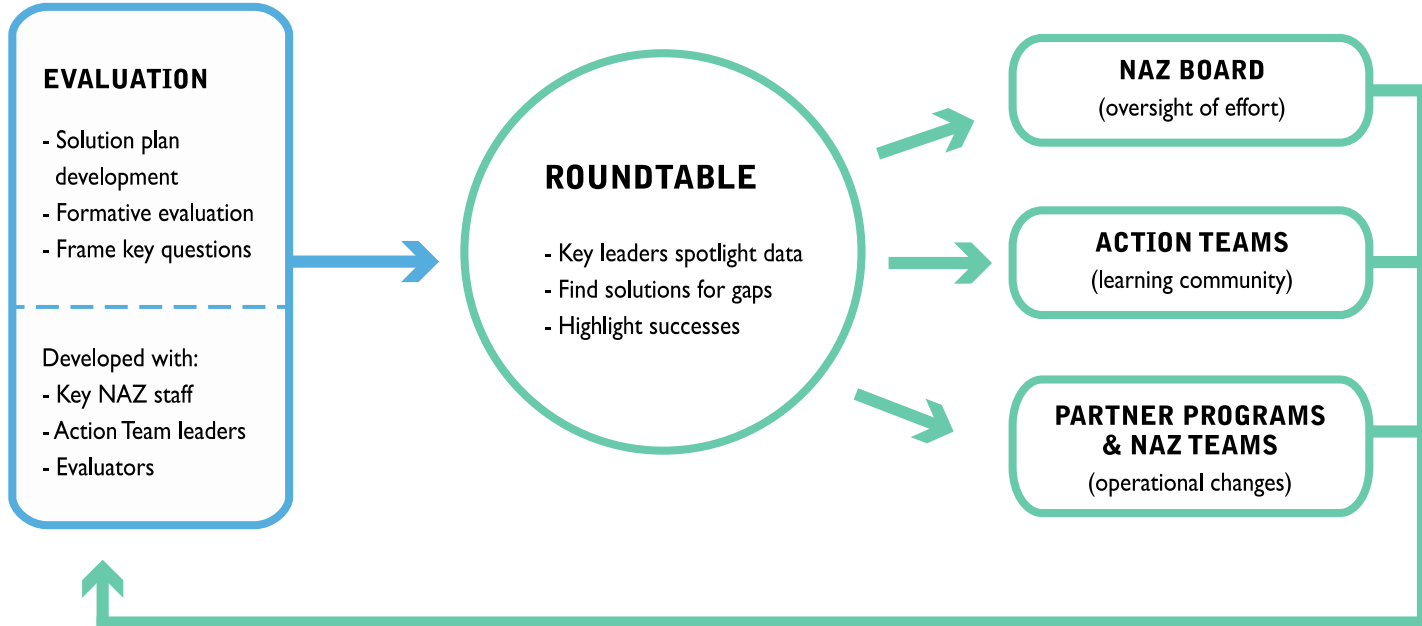
- Goal for all families, schools, partners: College!
- Achievement plan
- Data and progress monitoring system: NAZ Connect
- Results process: NAZ Seal of Effectiveness & Results NAZ
- Team of NAZ staff located across partners

THEORY OF ALIGNED CONTRIBUTION

- How we move from talk to action to produce better results
- Predicts that outcomes will become accelerated when people from multiple sectors with specific skills and a sense of heightened urgency:
 - Make an unequivocal commitment to a result for a specific population; and
 - Work together to align efforts to reach enough people/scholars (“scale”) doing more of what we know works (“scope”)

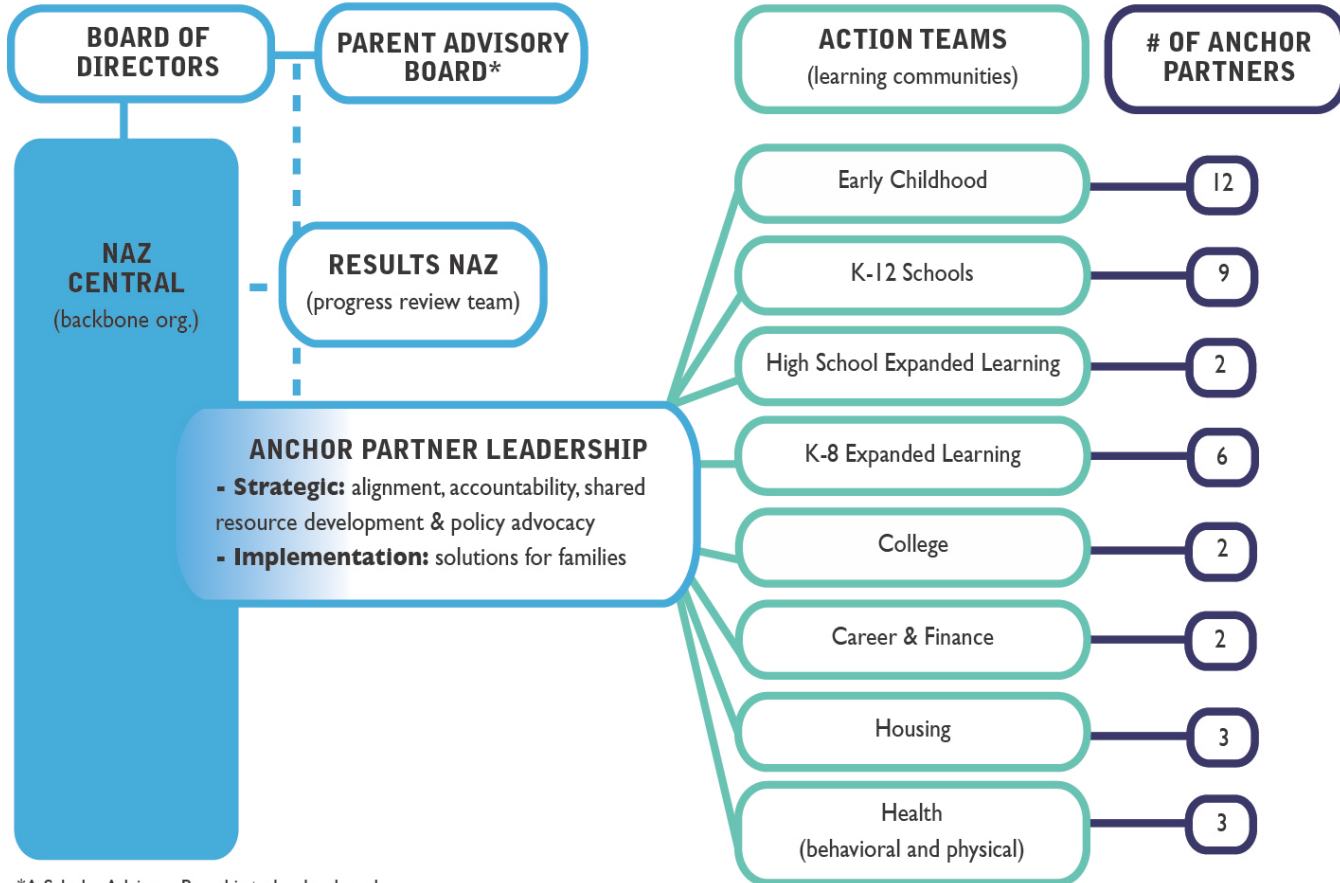
How we make sure we are all in High Action/High Alignment
toward *agreed upon results*

RESULTS NAZ



KEY LEARNINGS are captured and implemented through the ongoing internal evaluation process. Full evaluation repeated annually.

NAZ LEADERSHIP STRUCTURE



*A Scholar Advisory Board is to be developed.

TEAM JAQUAN

**MOM &
FAMILY**

**NAZ
CONNECTOR**

**ACADEMIC
NAVIGATOR**

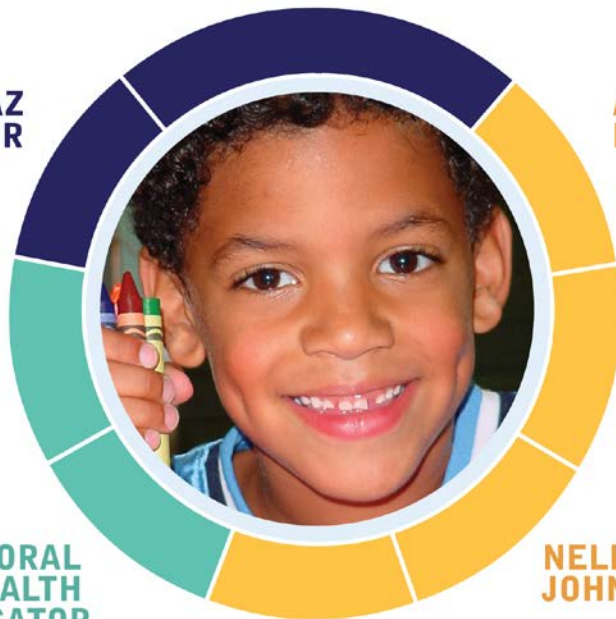
**NORTHPOINT
COUNSELOR**

**YMCA BEACONS
AFTER-SCHOOL
& SUMMER**

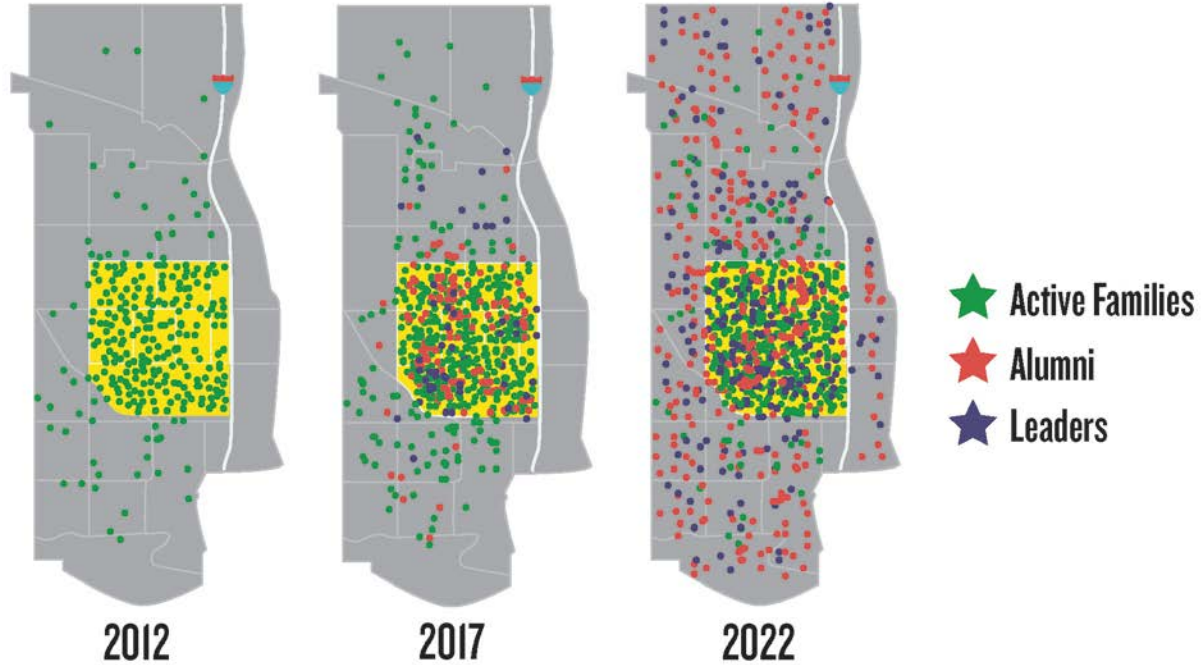
**BEHAVIORAL
HEALTH
NAVIGATOR**

**NELLIE STONE
JOHNSON**

**BIG BROTHER
MENTOR**



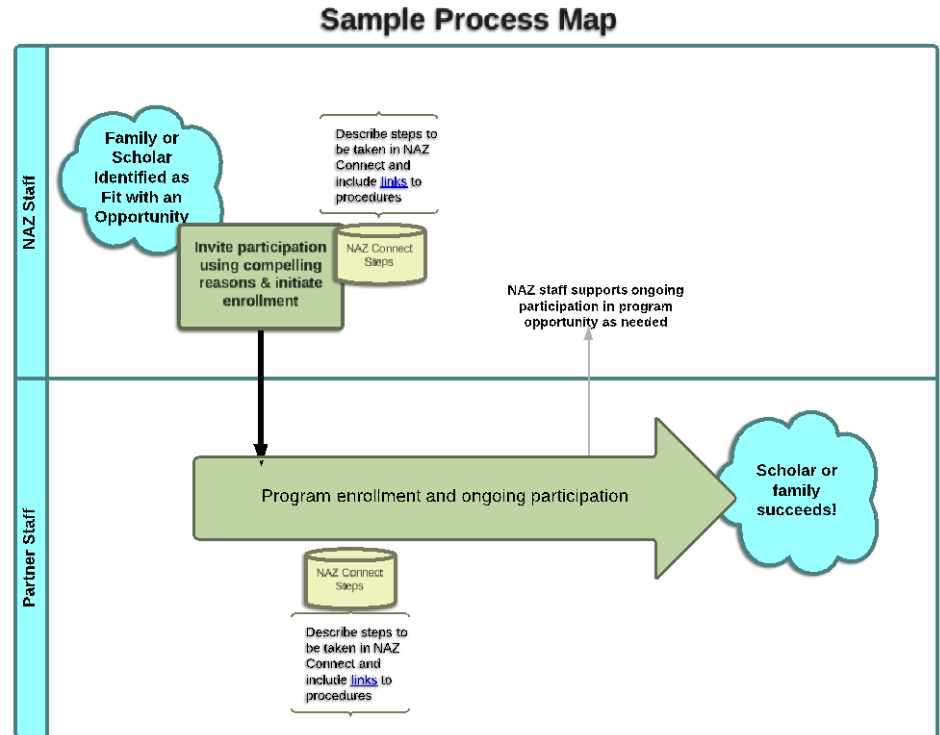
MULTIPLYING THE IMPACT



COLLABORATIVE PROCESS

Collaborative Action Requires Shared Process

- User-friendly standard operating procedures
- Used across partners
- depict flow for how a family or scholar moves through pathways to success.



THE NAZ APPROACH

To permanently closing the achievement gap

NORTHSIDE TRANSFORMATION

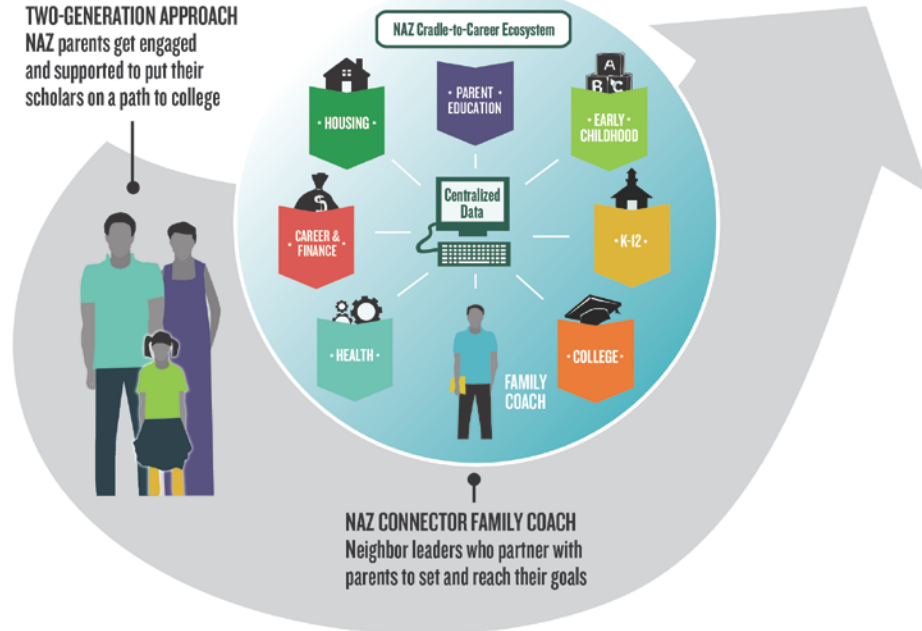
Thousands of parents and scholars reach new levels of achievement leading to social and economic transformation

RESULTS FOCUSED COLLABORATIVE

Collaborative action driven by data leads to effective system and college-going culture

TWO-GENERATION APPROACH

NAZ parents get engaged and supported to put their scholars on a path to college



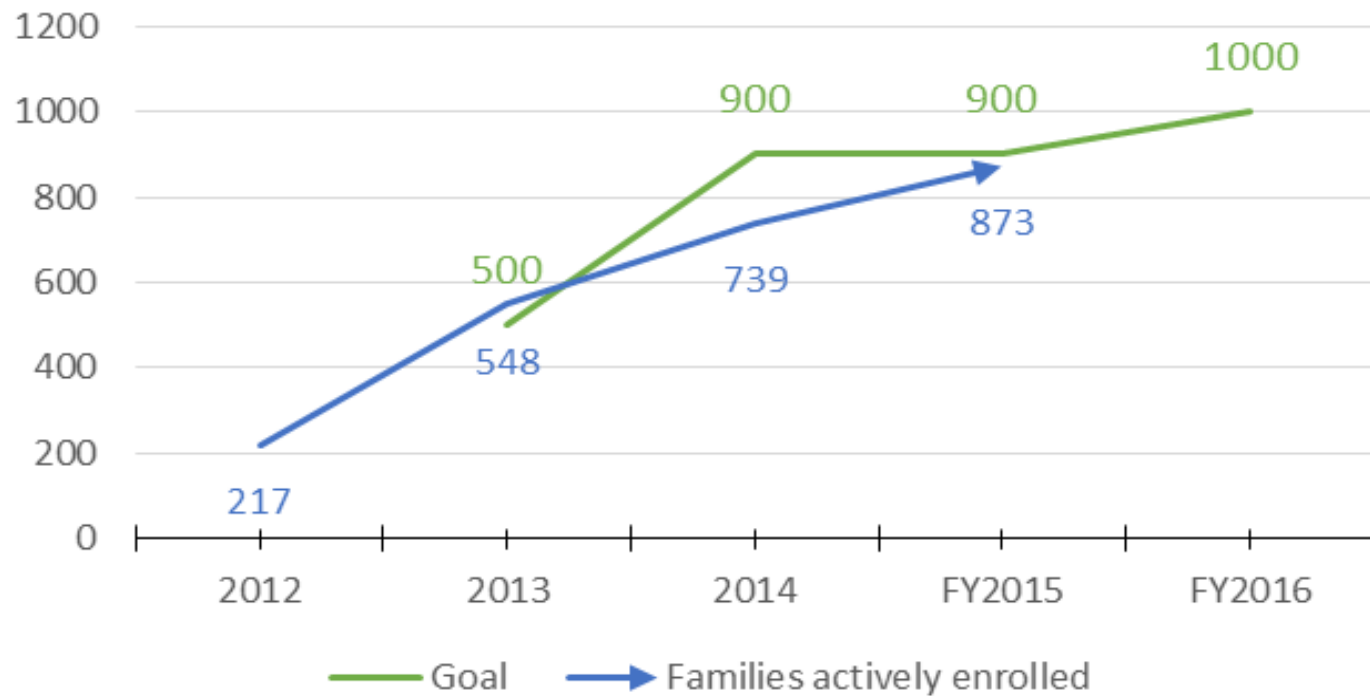
NAZ CONNECTOR FAMILY COACH

Neighbor leaders who partner with parents to set and reach their goals

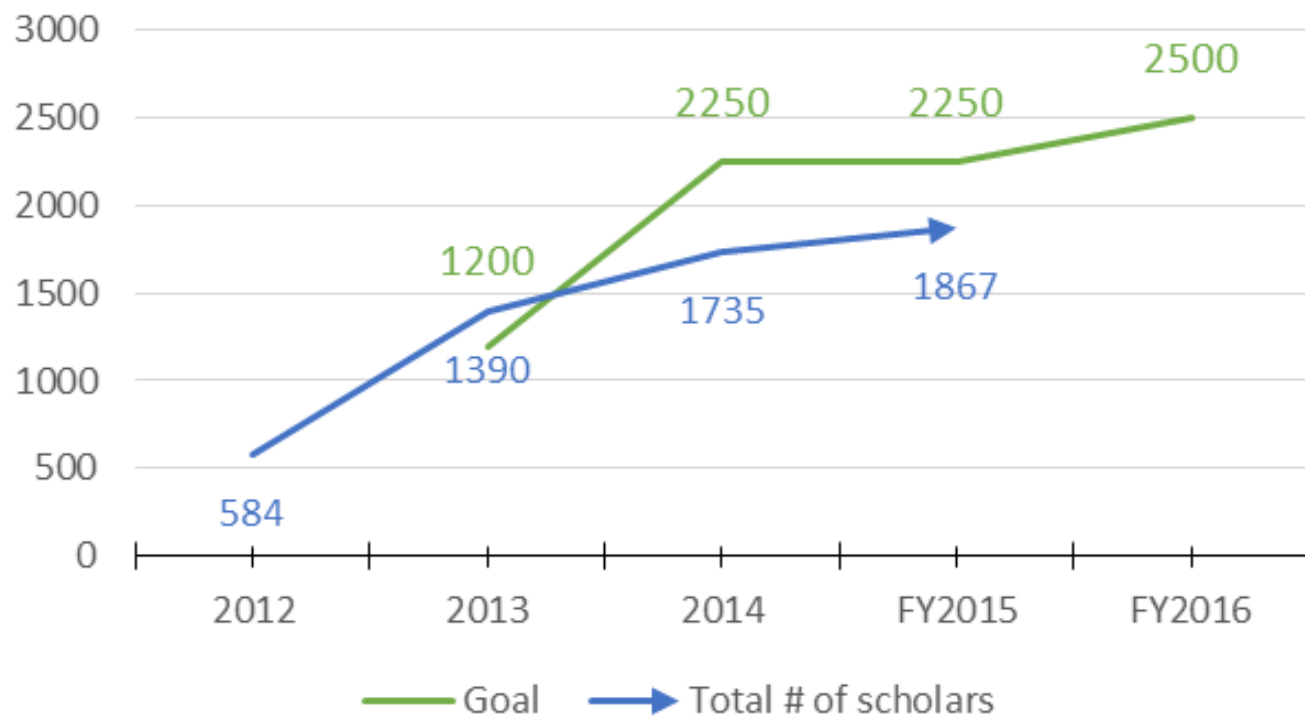
TAKING THE WORK TO SCALE



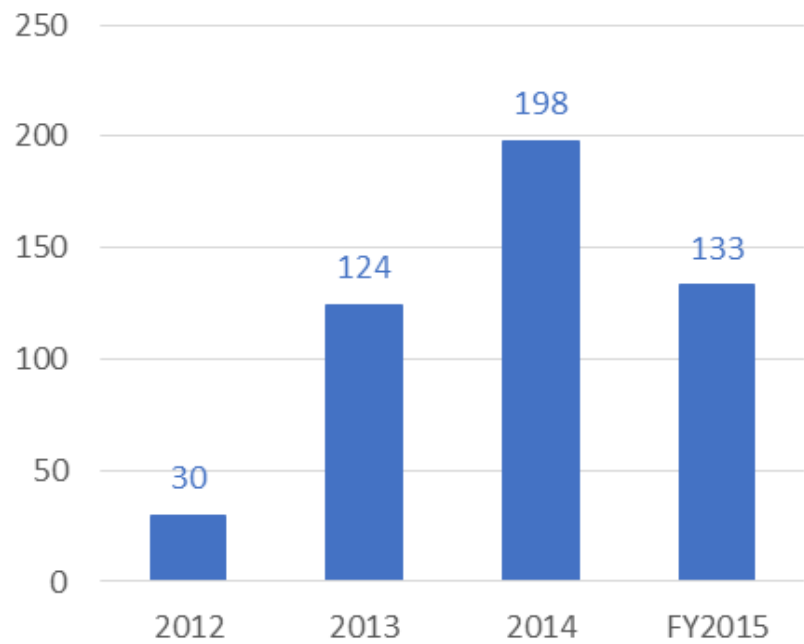
Family Enrollment in NAZ



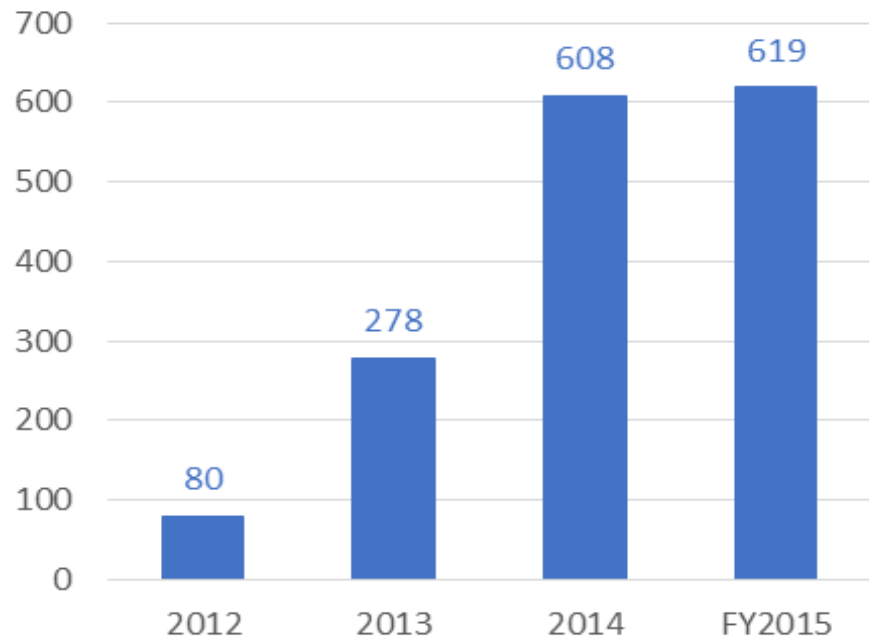
Scholar Enrollment in NAZ



Children enrolled in high-quality early learning programs



Scholars enrolled in NAZ ExL programs



of families stabilized

