

BRIEFING

Investing in Data and Equity in the Bay Area

May 9, 2024

Bay Area Equity Atlas

**Bay Area
Equity Atlas**

SFF San Francisco
Foundation

PolicyLink

USCDornsife
Equity Research Institute

Session Goals

Through this session, we want you to:

- **Reflect:** Learn more about the role of data and research justice in advancing equity in the region — and how the Bay Area Equity Atlas fills that unique need
- **Examine:** Delve into how data democracy supports sectors across our regional ecosystem
- **Inquire:** Get answers on how the Atlas can support your grantmaking, capacity-building, and strategic planning efforts

Agenda

- **Welcome & Introduction**

- **Panel Discussion**

Data Democracy in the Equity Ecosystem (with Q&A)

- **Presentation**

Centering Equitable Impact Through Research Justice

- **Invitation to Partnership**

- **Light Refreshments & Continued Conversation**

Speakers



Judith Bell
*Chief Impact
Officer*
San Francisco
Foundation
She/Her/Hers



**Omar
Carrera**
*Chief
Executive
Officer*
Canal Alliance
He/Him/His



**Ryan
Fukumori**
*Senior
Associate*
PolicyLink
He/Him/His



**Abbie
Langston**
*Vice President
of Research*
PolicyLink
She/Her/Hers



**Ezinne
Nwankwo**
*Postdoctoral
Scholar*
USC Equity
Research
Institute
She/Her/Hers



**Manuel
Pastor**
Director
USC Equity
Research
Institute
He/Him/His

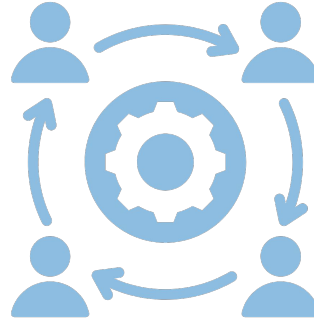


**Jennifer
Tran**
*Director of
the National
Equity Atlas*
PolicyLink
She/Her/Hers

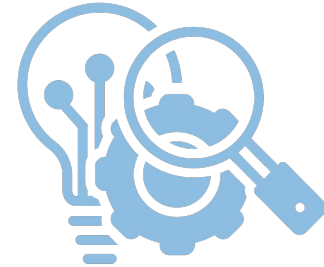
The Bay Area Equity Atlas continues to be a critical tool to advance equitable policies and practices.



BAEA is a tool for equitable impact.



BAEA uses a research justice model.



BAEA provides quality, responsive research.

Research Expertise & Personal History

- **Immigration & “Seeing” Inequality:** Lagos, Nigeria and San Francisco, California
- **SFSU:** Rooted in social change and social justice
- **Research:** equity, health outcomes, and immigrant inclusion



Source: San Francisco State University

Black Immigrant Adults & Health Coverage in the US

About

21%

of Black people in the US are either immigrants or their US-born children.

Source: American Community Survey microdata (2017-2021) from IPUMS USA

Are the factors that shape lack of coverage for US-born Black people and other immigrant groups also true for Black Immigrants?

- **Focus:** Black immigrant health outcomes
- **Data:** National data from American Community Survey (2017-2021), imputation of documentation status
- **Analyses:** Series of regression models to estimate likelihood of being uninsured, net of influential factors

Black Immigrant Adults & Health Coverage in the US

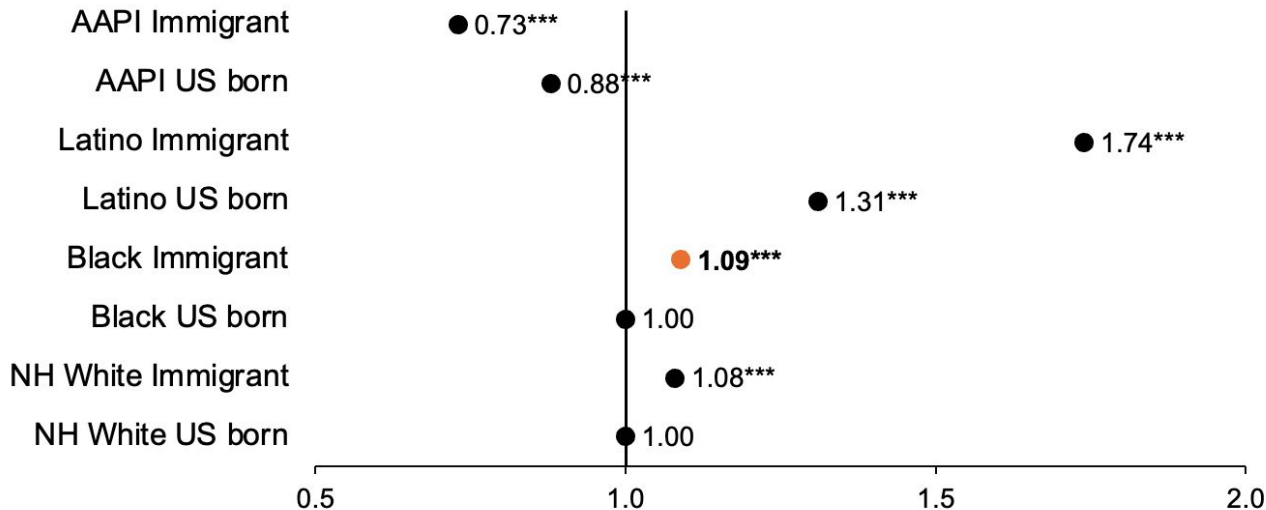
Black immigrants were

9%

more likely to be
uninsured than US-born
white people.

Source: American Community
Survey microdata (2017-2021)
from IPUMS USA

Weighted Logistic Regressions Results Predicting the Likelihood
of Being Uninsured among US-born and Immigrant Adults
by Health Insurance Status, 2017–2021, N=11,343,733



Black Immigrants: An Emerging Regional Population

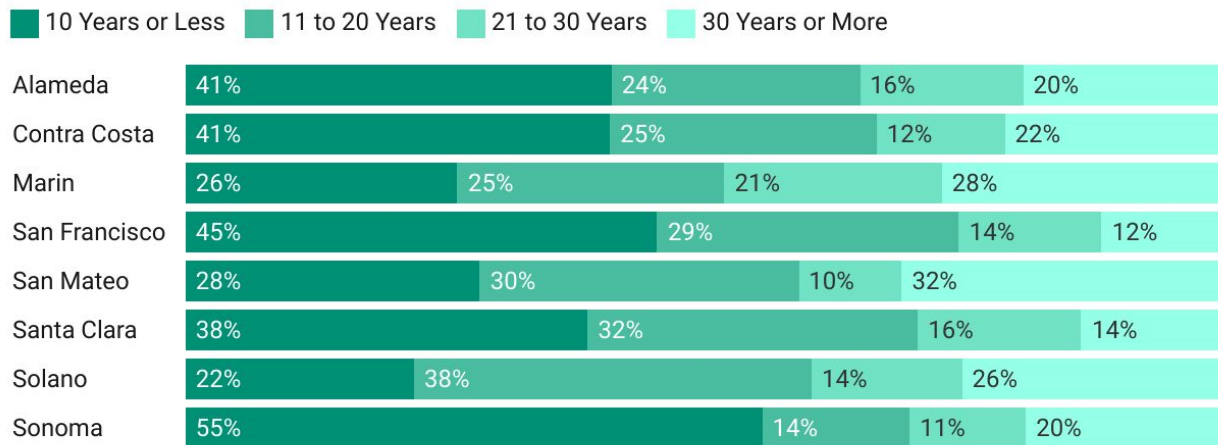
The Bay Area's Black immigrant population grew by

55%

between 2010 and 2020
— from 36,000 to 55,700.

Source: Bay Area Equity Atlas
analysis of American Community
Survey data from IPUMS USA

Black immigrants by recency of arrival and by county, 2020



This visualization includes all residents who identify as Black, regardless of identification with other racial/ethnic groups. Data sample sizes for Napa County are too small to report.

Source: Bay Area Equity Atlas analysis of American Community Survey microdata from IPUMS USA. • Created with Datawrapper

Black Immigrants & Barriers to Homeownership

Only
30%
of Black immigrant
households in the Bay
Area are homeowners,
compared to a majority
(53%) of all immigrant
households.

Source: Bay Area Equity Atlas
analysis of American Community
Survey data from IPUMS USA

Homeownership rates by race and nativity of householder, 9-County Bay Area

■ 2010 ■ 2020



Source: Bay Area Equity Atlas analysis of American Community Survey microdata from IPUMS USA • Created with Datawrapper

Research Series: *Black Communities in the Bay Area*



**Diversity,
Nativity, and
Ancestry**



**Homeownership
and Housing
Burden**



**Occupational
Segregation
and Wages**

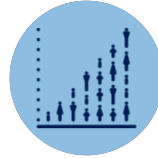


**Interactive
Dashboard**

Forthcoming and Future Analyses



**Affordable Housing
Production and Rent**



**In-migration, Out-migration,
and Displacement**



**Refineries, Air Pollution,
and Environmental Racism**



**Surveying the Bay Area
Workforce**



**Summary of Local Government Budgeting for American
Rescue Plan Act Funds**

Strengthening Our Shared Equity Ecosystem

Cross-Sectoral Systems Change

- **Connecting cutting-edge research to grassroots advocacy** and community-led organizations
- **Supporting local government** in using data for equitable decision-making
- **Challenging traditional role of community perspectives** within grant-based research initiatives

“We're grateful to [the Bay Area Equity Atlas] for their efforts in making data accessible and enhancing the skills of our government staff.”

— Andrea Aguiar, Racial Equity Manager, San Jose Office of Racial Equity

Strengthening Our Shared Equity Ecosystem

For Nonprofits

Your grantees are our primary audience!

- Accessible data tools
- Peer trainings and direct support
- Organizational capacity-building for long-term impact

For Philanthropic Organizations

Partnership in a community-driven approach to research

- Data-driven impact planning
- Expertise in equity frameworks and regional analysis
- Democratizing power that comes from knowledge

Research Justice & Histories of Home

Tule Lake War Relocation Center, 1943



Source: Fukumori family archives

Kaiser Shipyards, Richmond, CA, 1946



Source: monumenttoextraction.org

Connect with Us



Jennifer Tran
Director of the
National Equity Atlas
PolicyLink

jtran@policylink.org



Ryan Fukumori
Senior Associate
PolicyLink

ryan@policylink.org

Explore more data and research about our region on the Bay Area Equity Atlas at:
bayareaequityatlas.org

